

# Seats for Liebherr construction vehicles



**ISRI® 6830/870**  
**P/N 89889-30**

Pneumatic suspension driver's seat

The seat is the star.



Seating – on a higher level.



## ISRI® 6830/870 P/N 89889-30

Our comfortable driver's seat for construction vehicles is exceptionally well made and extremely tough. The mechanical suspension is available in various versions to suit different vehicles, all of which conform to EN/ISO 7096:2000.

The seat can be adjusted as required and comes with height and tilt adjustment as standard. Together with the anatomically shaped seat and backrest, these features take the tiredness out of driving. The high-quality cover material is very hard-wearing.

### Equipment

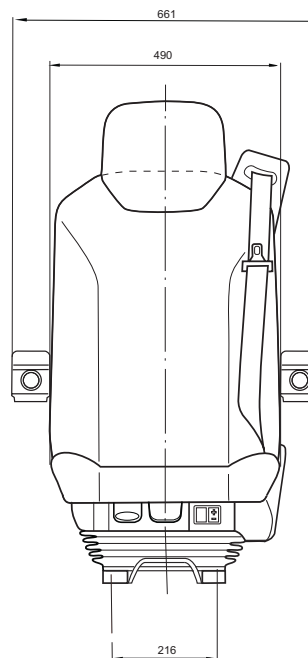
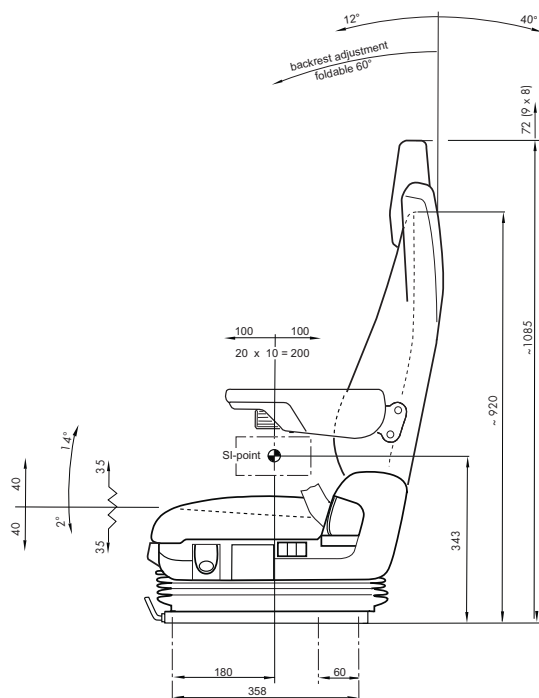
- Operation on the left and in front
- Integrated 3-point belt system with upper belt diverter on the left side
- Integrated compressor 24 V with manual weight/height adjustment
- Adjustable shock absorber
- Backrest adjustment
- Seat inclination adjustment
- Seat cushion adjustment
- Horizontal adjustment
- IPS (pneumatic lumbar support + adjustable side walls)
- Seat heating 24 V
- Comfort armrest, upholstered with textile fabric
- Included headrest, upholstered with textile fabric
- Seat cover ISRI textile anthracite with fine silvery stripes

### Standards

- Complies with ISO 6683
- Complies with ISO 7096
- Complies with SAE J2292

### Belt color: orange

- Pantone 021 U



ISRINGHAUSEN Inc.  
4269 Crosspoint Dr. Unit U  
Ladson, SC 29456  
USA  
Phone: 833-249-5061 (Inside US)  
843-225-1551 (Worldwide)

Phone (209) 484-5344, Fax (209) 484-5344  
www.isriusa.com

